



KOMROWSKI

M/V "ADRIAN"

TYPE:	SELSUSTAINED CELLULAR CONTAINERVESSEL - B 170			
CLASS:	GERMANISCHER LLOYD +100 A5 CONTAINERSHIP IW, SOLAS II-2 REG. 54, NAV-O +MC AUT			
BUILT:	6/1997 AT STOCZNIA SZCZECINSKA S.A., SZCZECIN			
TONNAGE:	INTERNATIONAL	16,800	8,672	GRT / NRT
	SUEZ	17,201	14,445	GRT / NRT
	PANAMA	----	/ 15,114	PC/UMS
DWAT/DRAFT:	22,984 MTS ON 9.905 SSW DRAFT			
DIMENSIONS:	LENGTH OVER ALL	184.10M		
	BREADTH MOULDED	25.30M		
	LENGTH BETWEEN PP	172.36M		
	DEPTH	13.50M		
FLAG:	LIBERIA			

CONTAINERS: ALL INTAKES ARE ALWAYS SUBJECT TO VESSEL'S TRIM, STABILITY, DEADWEIGHT, PERMISSIBLE WEIGHTS, PERMISSIBLE LASHING GEAR, BREAK LOADS, CONTAINER LASHING PLAN, RANGES OF VISIBILITY, PANAMA/SUEZ REGULATIONS AND OSHA RULES IN WHICH CASE INTAKES AND STACKWEIGHTS CAN BE CONSIDERABLY REDUCED.

	on deck	in hold	total
20'	1,096TEU	634 TEU	1,730 TEU
40'+20'	520 FEU + 48 TEU	305 FEU + 24 TEU	825 FEU + 72 TEU
Reefer	300 plugs	-	300 plugs
40' High Cubes	426 units	236 units	662 units
45'	212 units	-	212 units
40' pallet wide 2.50 m	104 units	305 units	409 units
Homo intake bss 14 mts	1,120 TEU		



KOMROWSKI

	INTAKE PANAMA CANAL RANGE OF VISIBILITY: 1,582 TEU UP TO 212 UNITS OF 45' LENGTH RESPECTIVELY 80 UNITS OF 48' LENGTH MAY BE STOWED ON DECK POSSIBLE STOWAGE IN HOLDS: FOUR TIERS 8'6" PLUS ONE TIER 9'6" EXCEPT HATCH NO. 2				
CONTAINER FITTINGS:	FULLY CELLULARIZED IN HOLDS FOR 40' UNITS. ALTERNATIVELY 2 x 20' UNITS CAN BE STOWED INTO EACH 40' COMPARTMENT. FITTED WITH LOOSE LASHINGS FOR 20'/40'/45'/48' UNITS.				
REEFER:	440V, 60 HZ, 3 PHASES 3 O'CLOCK				
STACK LOADS:		20'	40'	45'	48'
	TANKTOP	140 MTS	175 MTS	--	--
	MAIN DECK:	75 MTS	120 MTS	--	--
	HATCHES 1,2:	40 MTS	60 MTS	--	--
	HATCHES 3-9:	60 MTS	90 MTS	90 MTS	90 MTS
4 HO/9 HA:	HATCH NO 1:	12.48 X 13.00 M - COVERED BY 1 PONTOON			
	HATCH NOS 2-9:	12.48 X 20.60 M - COVERED BY 2 PONTOONS			
HATCH COVERS:	PONTOON TYPE HATCH COVERS DEVIDED INTO TWO LONGITUDINAL SECTIONS WHICH CAN BE OPENED IN UNCONSTRAINED SEQUENCE, EXCEPT HATCH NO. 1 WHICH IS A SINGLE PONTOON				
CRANES:	3 X 40 MTS SINGLE CRANES, OUTREACH ABT. 28M				
TANK CAPACITY:	IFO ABT 2,184 CBM - MDO ABT 165 CBM WATERBALLAST 7,867 CBM				
MAIN ENGINE:	SULZER 6 RTA 62U OF 13,320 KW AT 113 RPM				
AUXILLARIES:	3 x SULZER 9S20H OF 1,540 KVA AT 900 RPM				



KOMROWSKI

SPEED/

CONSUMPTION:

ABT 20 KNOTS ON ABT 54,5 MTS IFO AT DESIGN DRAFT OF 9.75M BASIS CLEAN AND SMOOTH BOTTOM, EVEN KEEL, DEEP AND CURRENTLESS WATER/SEA WITH A TEMPERATURE OF MAX 28 DEGREES CELSIUS, WIND MAX BEAUFORT 2 AND SEA NOT EXCEEDING DOUGLAS SEA STATE 2. NO MDO AT SEA EXCEPT IN CASE OF EMERGENCY. CHARTERERS TO PROVIDE SUFFICIENT QUANTITY OF MDO DURING SEA PASSAGES FOR OPERATING AUXILIARIES/GENERATORS IN CASE OF EMERGENCY.

NOTWITHSTANDING ANYTHING ELSE CONTAINED IN THIS CHARTER PARTY, THE CHARTERERS SHALL SUPPLY FUELS OF SUCH SPECIFICATION AND GRADES TO PERMIT THE VESSEL, AT ALL TIMES, TO MEET THE MAXIMUM SULPHUR CONTENT REQUIREMENTS OF ANY EMISSION CONTROL ZONE WHEN THE VESSEL IS TRADING WITHIN THAT ZONE. THE CHARTERERS SHALL INDEMNIFY, DEFEND AND HOLD HARMLESS THE OWNERS IN RESPECT OF ANY LOSS, LIABILITY, DELAY, FINES, COSTS OR EXPENSES ARISING OR RESULTING FROM THE CHARTERERS' FAILURE TO COMPLY WITH THIS CLAUSE. FOR THE PURPOSE OF THIS CLAUSE, "EMISSION CONTROL ZONE" SHALL MEAN ZONES AS STIPULATED IN MARPOL ANNEX VI AND/OR ZONES REGULATED BY REGIONAL AND/OR NATIONAL AUTHORITIES SUCH AS, BUT NOT LIMITED TO, THE EU AND THE U.S. ENVIRONMENTAL PROTECTION AGENCY.

PORT

CONSUMPTION:

ABT. 5.0 MTS IFO DAILY INCL. CRANES
ABT. 3.0 MTS MDO DAILY WHEN IDLE

ALWAYS EXCLUDING REEFERS AND VENTILATION PLUS SOME IFO FOR HEATING FUEL OILTANKS.

FUEL

SPECIFICATION:

ISO STANDARD 8217:2005(E) OR ANY SUBSEQUENT AMENDMENT THEREOF CLASS 'RMG₃₅' OR BETTER (FOR IFO) AND CLASS 'DMB' OR BETTER (FOR MDO). THE PRODUCT MUST BE COMPOSED OF STRAIGHT MINERALS ONLY AND FIT FOR USE IN VESSEL'S ENGINES WITHOUT ANY CHEMICALS, WASTE LUBRICANTS OR ANY OTHER HARMFUL SUBSTANCES. FUELS TO BE SUPPLIED BY



KOMROWSKI

CHARTERERS WITHIN SPECIFIED CCAI LIMITS OF ENGINE MAKER, BUT NOT EXCEEDING CCAI VALUE OF MAXIMUM 850.

BUNKERS OF DIFFERENT GRADES/QUANTITIES/SUPPLIERS NOT TO BE MIXED.

SLUDGE REMOVAL, IF ANY, TO BE FOR CHARTERER'S ACCOUNT AND TIME.

THE VESSEL WILL PARTICIPATE IN THE FOBAS FUEL QUALITY TESTING PROGRAM. SAMPLES WILL BE TAKEN DURING EACH BUNKERING. COSTS INVOLVED IN THE AMOUNT OF USD 300.- PER SAMPLE TO BE EQUALLY SHARED BETWEEN OWNERS AND CHARTERERS.

FITTINGS:

SUEZ, PANAMA, WWF/AUSTRALIA REGULATION, GMDSS, SATELLITE COMMUNICATION (TELEPHONE/TELEX/FAX), ANTI HEELING INSTALLATION:

PUMP CAPACITY 450 CBM/HR.

THE VESSEL IS EQUIPPED WITH A BOWTHRUSTER (750 KW) WITH SUCTION TUNNEL WHICH IS AT CHARTERERS DISPOSAL, HOWEVER, OWNERS ARE NOT RESPONSIBLE FOR MAL-FUNCTIONING OF THE UNIT AND/OR CONSEQUENCES THEREOF

SPECIAL FEATURES:

CAPABLE OF CARRYING IMO CARGO UNDER DECK:

HOLD 1: IMDG 1,2,3,4,5,1,6,1,8

HOLDS 2-4: IMDG 1,4S,2,3,4,5,1,6,1,8

(IMO CLASSED CARGO(ES) ALWAYS TO BE LOADED IN STRICT CONFORMITY WITH IMO AND LOCAL SAFETY REGULATIONS AS WELL AS IN ACCORDANCE WITH THE VESSEL'S CERTIFICATE OF COMPLIANCE FOR THE CARRIAGE OF DANGEROUS GOODS.)

ELECTRICALLY VENTILATED HOLDS: 6 AIRCHANGES/ HOUR BASIS
EMPTY HOLDS - CO₂ FITTED INCLUDING SMOKE DETECTOR IN CARGO HOLDS AND ENGINE ROOM

CAPABLE OF CARRYING BREAKBULK CARGO IN HOLD NOS. 2,3 AND 4 ON TANKTOP AREAS WITH UPTO 3 LAYERS OF 40'x8'6" CONTAINERS OF 30 MTS EACH ON TOP OF HINGED STOPPERS



KOMROWSKI

(ALL DETAILS ABOUT, GIVEN IN GOOD FAITH BUT WITHOUT
GUARANTEE)

[illegible]

NAVIGATIONAL EQUIPMENT			
EQUIPMENT	TYPES	MANUFACTURE	SUPPLIER
Radar (2 off)	5030 CK 343 5030 CAD 342	RACAL DECCA	STN ATLAS ELEKTRONIK
Radar transponder	DEBEG 5900	STN ATLAS ELEKTRONIK	STN ATLAS ELEKTRONIK
Bottom log	DEBEG 4675	C. PLATH	STN ATLAS ELEKTRONIK
DGPS receiver	NT 2000	STN ATLAS ELEKTRONIK	STN ATLAS ELEKTRONIK
GPS receiver	NT 200	STN ATLAS ELEKTRONIK	STN ATLAS ELEKTRONIK
Navigation echo sounder	ATLAS 9205	STN ATLAS ELEKTRONIK	STN ATLAS ELEKTRONIK
Navtex receiver	DEBEG 2900	STN ATLAS ELEKTRONIK	STN ATLAS ELEKTRONIK
Weather facsimile receiver	DEBEG 2952	STN ATLAS ELEKTRONIK	STN ATLAS ELEKTRONIK
Oya compass system	Sid 20	RAYTHEON ANSCHUTZ	RAYTHEON ANSCHUTZ
Adaptive auto pilot for rudder steering	NAUTOPLOT A	RAYTHEON ANSCHUTZ	RAYTHEON ANSCHUTZ
Magnetic compass system	REFLECTA 2	RAYTHEON ANSCHUTZ	RAYTHEON ANSCHUTZ
Rudder angle indicator system	Three facetype and repeaters	RAYTHEON ANSCHUTZ	RAYTHEON ANSCHUTZ
Sound signalling system	Zet Horn 141Ac Zet Horn 137Ac	ZOLLNER	ZOLLNER
Manual signalling searchlight	PL 4146	FAMOR	FAMOR
Window wiper system		W. G. SCHULZ	W. G. SCHULZ

RADIO EQUIPMENT			
EQUIPMENT	TYPES	MANUFACTURE	SUPPLIER
EPHIB 406 MHz	DEBEG 3540	STN ATLAS ELEKTRONIK	STN ATLAS ELEKTRONIK
2 VHF radiotelephone with DSC	DEBEG 6347	STN ATLAS ELEKTRONIK	STN ATLAS ELEKTRONIK
SATCOM Std B with phone, FAX	DEBEG 3230	STN ATLAS ELEKTRONIK	STN ATLAS ELEKTRONIK
SATCOM SLOC with ECG (2off)	DEBEG 3220	STN ATLAS ELEKTRONIK	STN ATLAS ELEKTRONIK
3 VHF handheld radiotele.	DEBEG 6701	STN ATLAS ELEKTRONIK	STN ATLAS ELEKTRONIK
Radio station AOC G.M.D.S.S.	DEBEG 3100	STN ATLAS ELEKTRONIK	STN ATLAS ELEKTRONIK

DESTINATION	
Carriage of 20' or 40' containers in holds or on deck	20', 40', 45' or 48' on hatch covers.
Height of holds adequate for 4 tiers of 8'6" containers and one tier of 9'6", except hold No 2	which accepts 6 tiers of 8'6" containers. Hold No 1 is prepared for carriage of dangerous goods of 1/2/1/3/4/1/4/2/3/5/1/5/2/6/7/8 Classes as per SOLAS, Chapter VII. Holds No 3-4 are prepared for carriage of dangerous goods of 2/3/4/1/4/2/3/5/1/5/2/6/7/8 Classes as per SOLAS, Chapter VII. 40' containers in holds are call-guided.
In holds No 2, No 3 and No 4 hinged stoppers are provided for the carriage of 3x40'x9'6" containers.	

SPEED	
Service speed (at 9.85 m draught)	19.7 kts.
Service speed (at ballast draught)	20.2 kts.
Fuel consumption	abt. 54.6 m ³ / 24 hrs HFO.
Cruising range	15000 n.m.

MAIN PROPULSION	
One two-stroke crosshead engines SULZER Licence HCEGELSKI type 6R1A2U, rating 13320 kW at 113 rpm. The engine drives one fixed pitch propeller, diameter 6.15 m, right hand rotation made by ABB ZAMECH Ltd.	

ELECTRICAL POWER PLANT	
Three three-phase alternators, type ABB-14B5, 1540 kVA at 900 rpm, 450 V, 60 Hz made by DOLMEL.	
Three four-stroke engines, SULZER Licence HCEGELSKI, type 9520H, rating 1540 kW at 900 rpm.	
One emergency four-stroke engine, LINDBERG/MAN, type 6.2/26B E/AVK 43M1-6, 140 kVA at 1800 rpm, 440 V, 60 Hz.	

STEERING GEAR	
One electrohydraulic steering gear, HYDROSTER, type MS 500, rating 500 kNm.	

BOW THRUSTER	
Manufactured by ABB ZAMECH Ltd, Liscen license type TEG, rating 755 kW at 337 rpm, thrust 110 kN.	

BOILERS	
Manufactured by AALBORG DANIA, for HFO tank heating preheaters and oil heat consumers required.	
One auxiliary smoke water boiler, vertical, 2.5 t/h, 0.7 MPa.	
One waste heat smoke tube boiler, 2.0 t/h, 0.7 MPa.	

EVAPORATOR	
Manufactured by ALFA-LAVAL, capacity 20 t/24h.	

BALLAST SYSTEM	
One centrifugal, self priming type pump of 350 m ³ /h capacity, 0.2 MPa. Additionally one spare SW cooling pump of 440 m ³ /h capacity can be connected to the ballast system.	

ANTI-HEELING SYSTEM	
One reversible pump of 450 m ³ /h, 0.15 MPa.	

HATCH COVERS	
Nine hatches fixed on the main deck, opening size: No 1 - Hatch - 12.48 x 13.90 m, No 2-9 Hatch - 12.48 x 20.60 m.	

HATCH COVERS	
No 1 Hatch - 28.0 t, No 2-9 Hatch - PS or SB - 28.0 t.	

CONTAINERS STACK LOADS	
Hatch covers - on No 1-2 Hatch - 40 t/TEU, 60 t/TEU, on No 3-9 Hatch - 50 t/TEU, 90 t/TEU, 120 t/TEU, 140 t/TEU, 175 t/TEU.	

UNIFORM LOAD	
Hatch covers - 1.75 t/m ² , Main deck (frame 42 x 62) - 1.55 t/m ² , Holds 1-4 - 14.00 t/m ² .	

REEFER PLUGS	
300 sockets for reefer containers 3x440V, 60Hz, 11.0kW on hatch coamings, made by WISKA, type 32/45/Mon - 150 PCS, 32/67/45/Mon - 150 PCS.	

CRANES	
Three deck cranes NMF of DK4002B 2PCS & DK4002B50 PCS, rated from 3.0 t to 100 t, 180° swing, 50/50. One life boat crane and storing crane TOWMOOR type P7010/2116A, radius from 1.8/2.2 m to 10.0/16.0 m, lifting capacity 70/21 tN.	

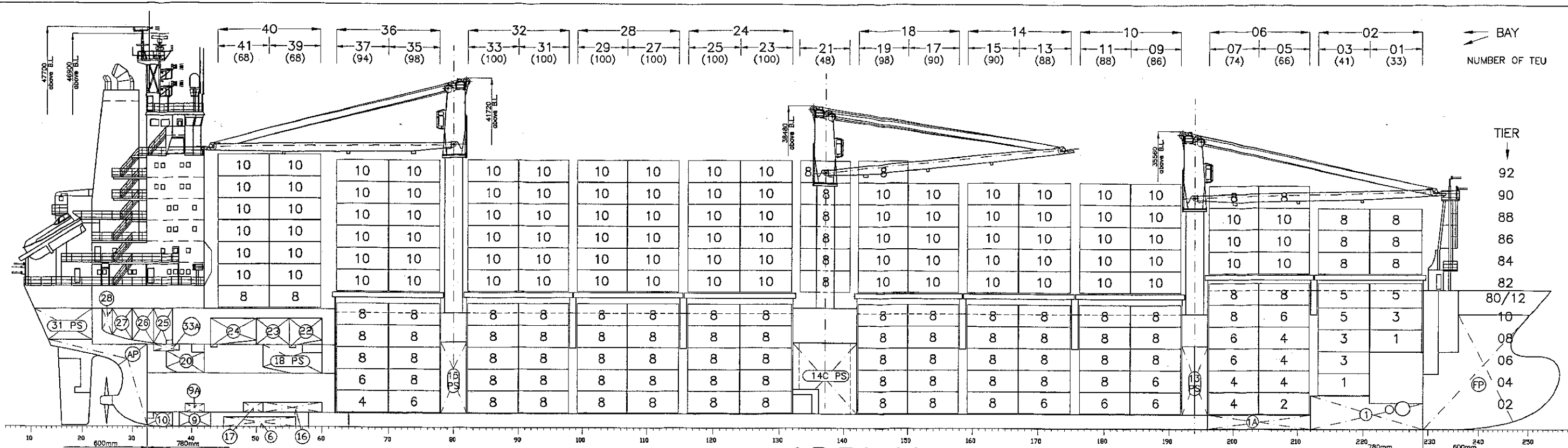
WINDLASSES	
Two combined windlass and automatic mooring winches 120 kN, made by TOWMOOR, cable lifter for 65 mm K3 stud link chain cable mooring section for 55 mm dia rope nominal pull 120 kN, speed 36/18 m/min.	
Two automatic mooring winches with winding reel for 60 mm dia rope, made by TOWMOOR, speed 36/18 m/min, nominal pull 120 kN.	
Two automatic mooring winches for 56 mm dia rope, made by TOWMOOR, speed 36/18 m/min, nominal pull 120 kN.	

SAFETY EQUIPMENT	
One Free-fall life boat type FF87-40 for 28 persons.	
Four automatically inflatable life raft with water pressure release and launching arrangement made by DSB.	
One inflatable life raft for 6 persons made by DSB.	
One pneumatic rescue boat DSB, type 420 IBR, for 8 persons.	

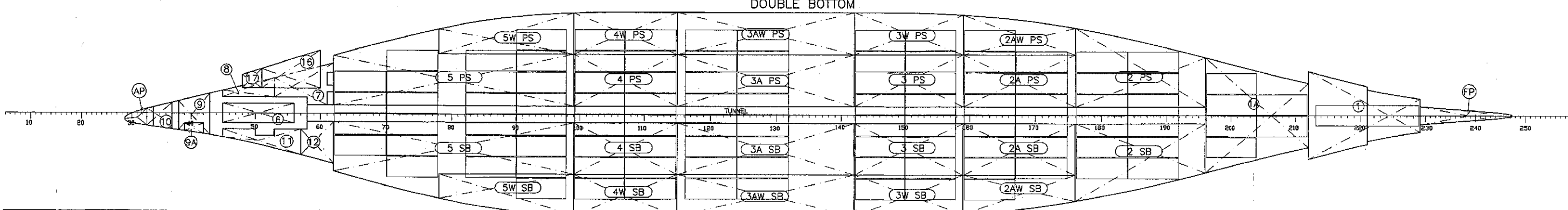
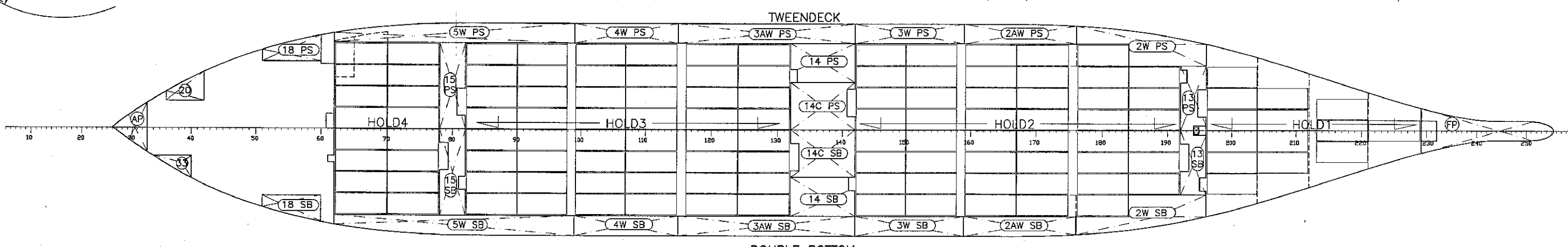
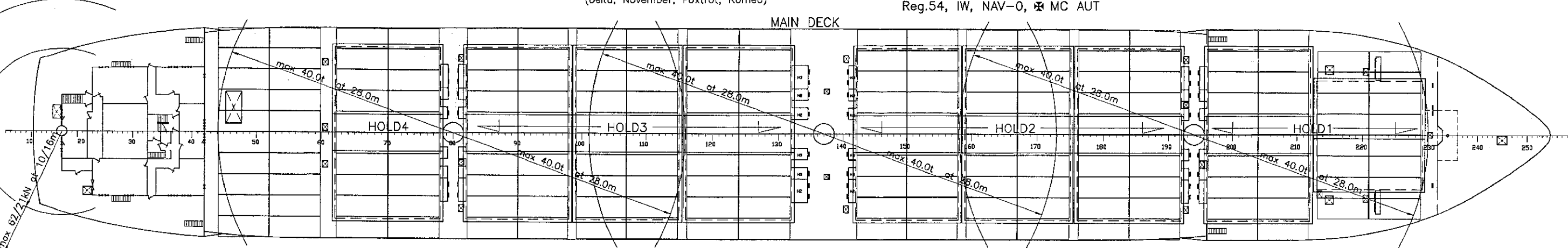
FIRE FIGHTING SYSTEM	
Engine room, cargo holds - high pressure CO ₂ systems, - water fire system, Weather decks - water fire system, No 1 Hold (additionally) - water spraying system.	

HOLD VENTILATION	
Axial - flow fans made by WITT & SOHN, three phase current motors, No 1, 2, 3, 4, Holds - 6 air changes/h.	

EQUIPMENT FOR	
Suez Canal, Panama Canal, Kiel Canal.	



OWNER: MS "ADRIAN" Schiffahrtsgesellschaft mbH & Co. HAMBURG, GERMANY
CALL SIGN: D N F R (Delta, November, Foxtrot, Romeo)
GL CLASS: 100 A5 Container ship, SOLAS II-2, Reg.54, IW, NAV-0, MC AUT
BUILDER: STOCZNIA SZCZECINSKA S.A. ul. Hutnicza 1, SZCZECIN Reg.50/B170/14



CONTAINERS CAPACITY	
HATCH NO	MAIN DECK
1	2
3	4
5	6
7	8
9	10
11	12
13	14
15	16
17	18
19	20
21	22
23	24
25	26
27	28
29	30
31	32
33	34
35	36
37	38
39	40
41	42
43	44
45	46
47	48
49	50
51	52
53	54
55	56
57	58
59	60
61	62
63	64
65	66
67	68
69	70
71	72
73	74
75	76
77	78
79	80
81	82
83	84
85	86
87	88
89	90
91	92
93	94
95	96
97	98
99	100
101	102
103	104
105	106
107	108
109	110
111	112
113	114
115	116
117	118
119	120
121	122
123	124
125	126
127	128
129	130
131	132
133	134
135	136
137	138
139	140
141	142
143	144
145	146
147	148
149	150
151	152
153	154
155	156
157	158
159	160
161	162
163	164
165	166
167	168
169	170
171	172
173	174
175	176
177	178
179	180
181	182
183	184
185	186
187	188
189	190
191	192
193	194
195	196
197	198
199	200
201	202
203	204
205	206
207	208
209	210
211	212
213	214
215	216
217	218
219	220
221	222
223	224
225	226
227	228
229	230
231	232
233	234
235	236
237	238
239	240
241	242
243	244
245	246
247	248
249	250
251	252
253	254
255	256
257	258
259	260
261	262
263	264
265	266
267	268
269	270
271	272
273	274
275	276
277	278
279	280
281	282
283	284
285	286
287	288
289	290
291	292
293	294
295	296
297	298
299	300
301	302
303	304
305	306
307	308
309	310
311	312
313	314
315	316
317	318
319	320
321	322
323	324
325	326
327	328
329	330
331	332
333	334
335	336
337	338
339	340
341	342
343	344
345	346
347	348
349	350
351	352
353	354
355	356
357	358
359	360
361	362
363	364
365	366
367	368
369	370
371	372
373	374
375	376
377	378
379	380
381	382
383	384
385	386
387	388
389	390
391	392
393	394
395	396
397	398
399	400
401	402
403	404
405	406
407	408
409	410
411	412
413	414
415	416
417	418
419	420
421	422
423	424
425	426
427	428
429	430
431	432
433	434
435	436
437	438
439	440
441	442
443	444
445	446
447	448
449	450
451	452
453	454
455	456
457	458
459	460
461	462
463	464
465	466
467	468
469	470
471	472
473	474
475	476
477	478
479	480
481	482
483	484
485	486
487	488
489	490
491	492
493	494
495	496
497	498
499	500
501	502
503	504
505	506
507	508
509	510
511	512
513	514
515	516
517	518
519	520
521	522
523	524
525	526
527	528
529	530
531	532
533	534
535	536
537	538
539	540
541	542
543	544
545	546
547	548
549	550
551	552
553	554
555	556
557	558
559	560
561	562
563	564
565	566
567	568
569	570
571	572
573	574
575	576
577	578
579	580
581	582
583	584
585	586
587	588
589	590
591	592
593	594
595	596
597	598
599	600
601	602
603	604
605	606
607	608
609	610
611	612