

BOW CECIL

KVAERNER2

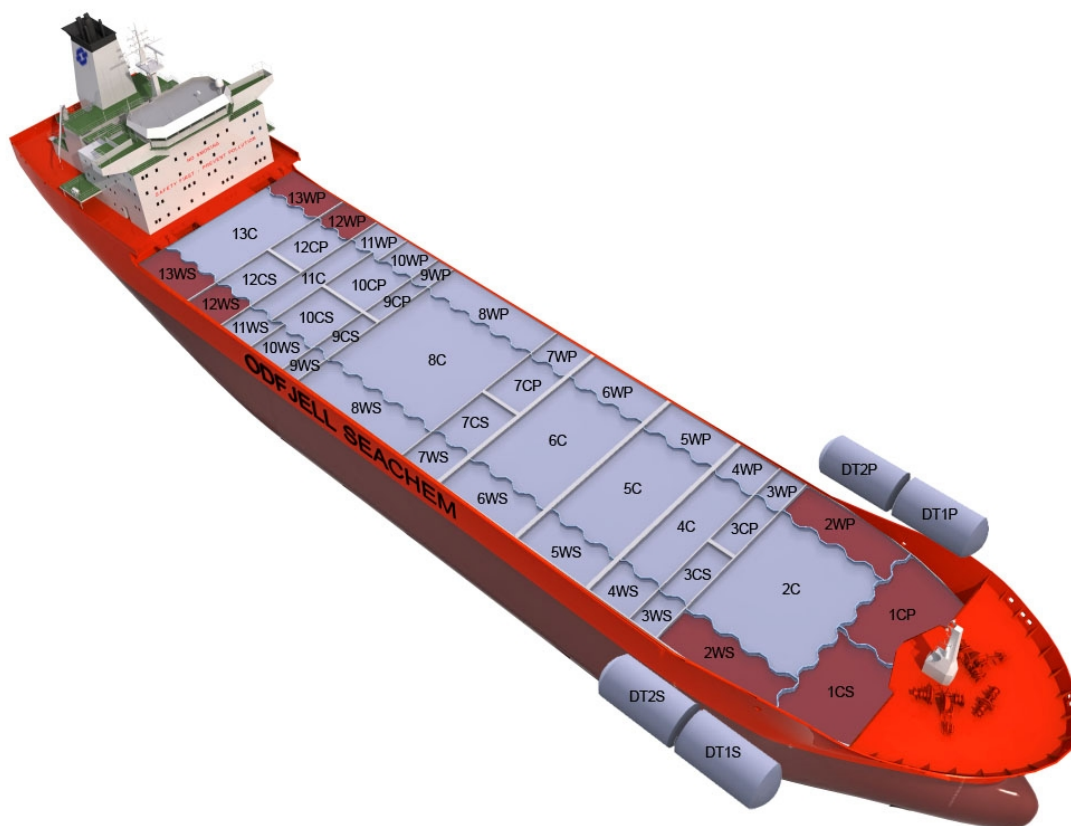
Chemical Tanker

Double/Single Hull: Double

Owner: Odfjell Ch Tanker AS

Technical Manager: Odfjell SE

Ship	Built
BOW FLORA	1998



Main Ship Particulars

Flag	NIS
Classification	DNVER
# Tanks	47
L.O.A	183,10 m
Breadth	32,20 m
Draft S.Dwt	10,72 m
Keel to mast	43,36 m
Dwt (Summer)	37369 mt
Light ship	11153 mt
TPC S. Draft	50,5 t/cm
Speed	14,3 knots
N2 Capacity	2000,0 m ³ /h
IGS System	0,0 m ³ /h
PO Capacity	8044,0 m ³
Parallel body length	64,60 m
Laden Ballast	77,60 m
Norm Ballast	71,10 m
Num. of Segregations	47

Capacity Details (98%)	
St.Steel	32689 m ³
Epoxy	
Zinc	7133 m ³

Manifold Details	
S.draft to manifold	5,60 m
Rail to manifold	4,50 m
Bow to manifold	95,30 m

Tonnage Details	Gross	Net
International tonnage	23206 mt	12176 mt
Suez tonnage	23386 mt	20699 mt
Panama tonnage		19334 mt

Please note that figures above are given on average basis, Visit www.odfjell.com for ship specific details

Capacity of Cargo Tanks

Compartment	Volume 98%	St.St/ Coating	Tank Type	Pump Capacity	Heating Capacity
10CP	586	Stainless Steel	Cargo		100,00
10CS	586	Stainless Steel	Cargo		100,00
10WP	606	Stainless Steel	Cargo		100,00
10WS	606	Stainless Steel	Cargo		100,00
11WP	602	Stainless Steel	Cargo		100,00
11WS	602	Stainless Steel	Cargo		100,00
12CP	586	Stainless Steel	Cargo		100,00
12CS	586	Stainless Steel	Cargo		100,00
4WP	580	Stainless Steel	Cargo		100,00
4WS	580	Stainless Steel	Cargo		100,00
5C	1734	Stainless Steel	Cargo		100,00
6C	2373	Stainless Steel	Cargo		100,00
6WP	1137	Stainless Steel	Cargo		100,00
6WS	1137	Stainless Steel	Cargo		100,00
7CP	540	Stainless Steel	Cargo		100,00
7CS	540	Stainless Steel	Cargo		100,00
7WP	554	Stainless Steel	Cargo		100,00
7WS	554	Stainless Steel	Cargo		100,00
5WP	833	Stainless Steel	Cargo		100,00
5WS	833	Stainless Steel	Cargo		100,00
13WP	861	Zinc	Cargo		100,00
13WS	861	Zinc	Cargo		100,00
1CP	1187	Zinc	Cargo		100,00
1CS	1186	Zinc	Cargo		100,00
1DP	153	Stainless Steel	Cargo		100,00
1DS	153	Stainless Steel	Cargo		100,00
12WP	564	Zinc	Cargo		100,00
12WS	564	Zinc	Cargo		100,00
13C	2320	Stainless Steel	Cargo		100,00
11C	1274	Stainless Steel	Cargo		100,00
2C	2562	Stainless Steel	Cargo		100,00
2DP	147	Stainless Steel	Cargo		100,00
2DS	147	Stainless Steel	Cargo		100,00
2WP	956	Zinc	Cargo		100,00
2WS	956	Zinc	Cargo		100,00
3CP	290	Stainless Steel	Cargo		100,00
3CS	290	Stainless Steel	Cargo		100,00
3WP	292	Stainless Steel	Cargo		100,00
3WS	292	Stainless Steel	Cargo		100,00
4C	1210	Stainless Steel	Cargo		100,00
8C	3058	Stainless Steel	Cargo		100,00
8WP	1470	Stainless Steel	Cargo		100,00
8WS	1470	Stainless Steel	Cargo		100,00
9CP	346	Stainless Steel	Cargo		100,00
9CS	346	Stainless Steel	Cargo		100,00
9WP	359	Stainless Steel	Cargo		100,00
9WS	359	Stainless Steel	Cargo		100,00
Total Center Tanks:	21598				
Total Wing Tanks:	17624				
Grand Total:	39822				

Dead Weight Scale

Bow Cecil

