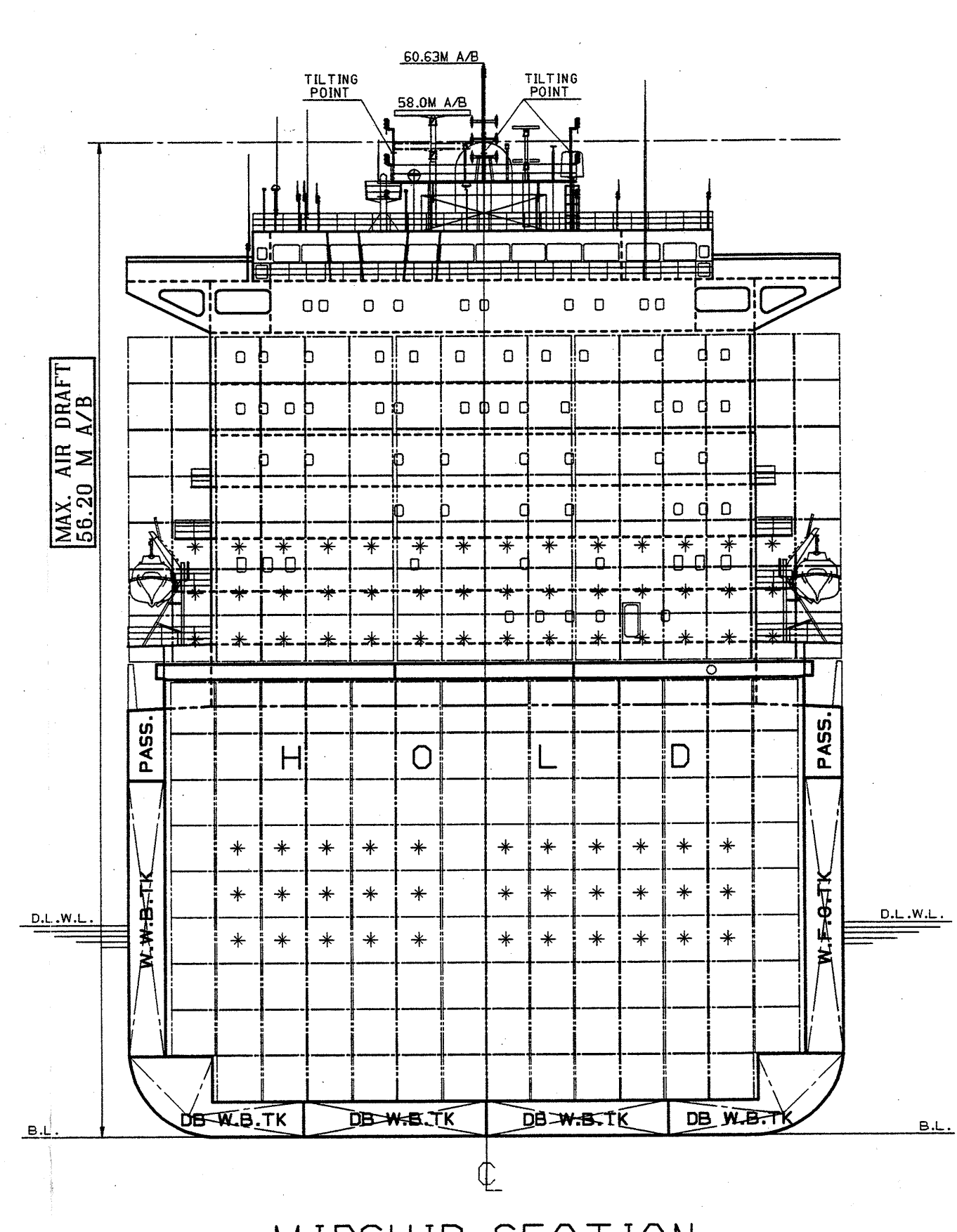
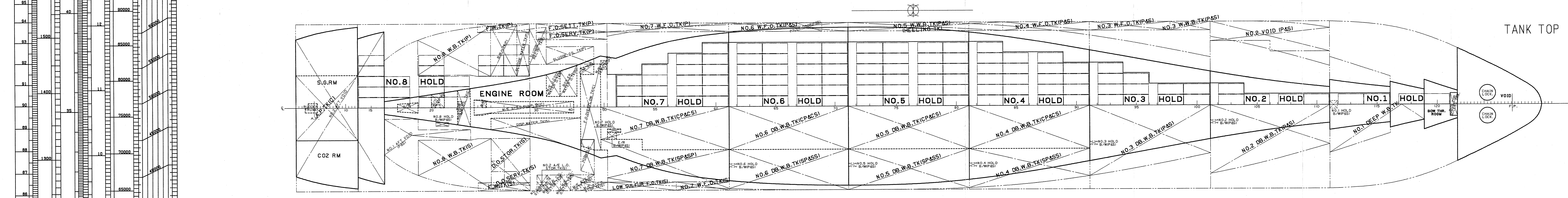
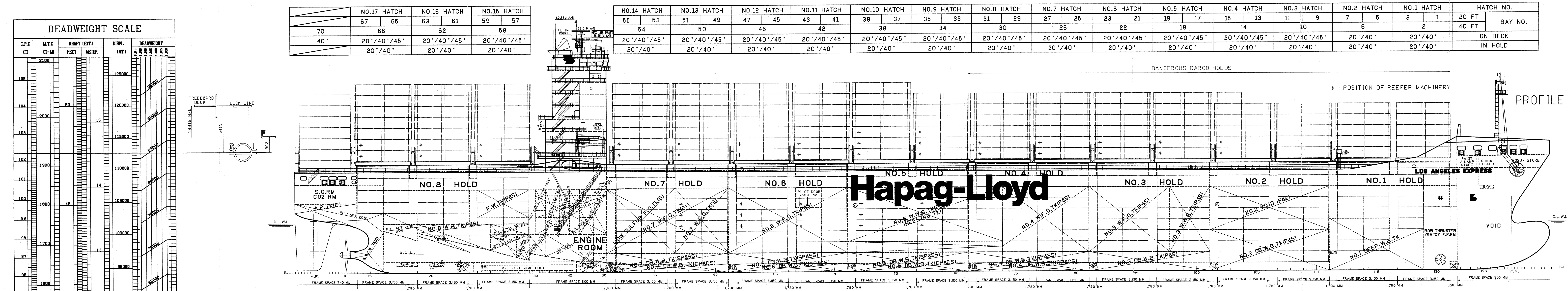


CAPACITY PLAN



TONNAGE			
ITEM	INTERNATIONAL	SUEZ	
GROSS TONNAGE	75590	77481.33	
NET TONNAGE	42233	66454.97	

DEADWEIGHT			
MARKS ZONE	FRESHWATER (MT)	DRAUGHT (M)	DEADWEIGHT (TONNES)
F FRESH WATER	5,113	14.823	112943.3
S SUMMER	5,415	14.521	112639.6

CARGO HOLD						
COMPARTMENT	LOCATION (FR.NO.)	VOLUME 100% (M ³)	WEIGHT 100% (TONS)	CEN. OF GRAVITY L.C.G. (M)	V.C.G. (M)	MAX F.S.MOM. (M ²)
NO.1 HOLD	111-122	8748.2	8748.2	111.70	18.42	55008
NO.2 HOLD	101-111	14935.2	14935.2	84.56	16.34	69008
NO.3 HOLD	91-101	20754.9	20754.9	56.20	15.26	110890
NO.4 HOLD	81-91	23547.8	23547.8	27.74	14.24	110890
NO.5 HOLD	71-81	24183.3	24183.3	-0.89	14.08	110889
NO.6 HOLD	61-71	24183.3	24183.3	-29.65	14.08	110889
NO.7 HOLD	51-61	23027.8	23027.8	-58.00	14.51	112123
NO.8 HOLD	14-28	19555.0	19555.0	-112.43	19.03	197987
SUB. TOTAL		158935.5	158935.5			

WATER BALLAST TANK						
COMPARTMENT	LOCATION (FR.NO.)	VOLUME 100% (M ³)	WEIGHT 100% (TONS)	CEN. OF GRAVITY L.C.G. (M)	V.C.G. (M)	MAX F.S.MOM. (M ²)
NO.1 DEEP W.B.TK(S)	111-119	1832.1	1832.9	109.89	6.25	6021
NO.2 DEEP W.B.TK(S)	101-111	1110.0	1135.7	84.02	5.01	848
NO.3 DEEP W.B.TK(S)	91-101	1108.0	1135.7	84.02	5.01	848
NO.4 DEEP W.B.TK(S)	81-91	858.3	877.7	56.13	2.20	2877
NO.5 DEEP W.B.TK(S)	71-81	858.3	877.7	56.13	2.20	2877
NO.6 DEEP W.B.TK(S)	61-71	858.3	877.7	56.13	2.20	2877
NO.7 DEEP W.B.TK(S)	51-61	858.3	877.7	56.13	2.20	2877
NO.8 DEEP W.B.TK(S)	14-28	488.4	500.6	66.00	12.32	95
NO.9 DEEP W.B.TK(S)	81-91	574.4	588.8	27.68	1.01	2568
NO.10 DEEP W.B.TK(S)	81-91	574.4	588.8	27.68	1.01	2568
NO.11 DEEP W.B.TK(S)	81-91	490.1	502.4	27.29	2.86	654
NO.12 DEEP W.B.TK(S)	81-91	490.1	502.4	27.29	2.86	654
NO.13 DEEP W.B.TK(S)	71-81	582.2	596.7	-0.94	1.00	2568
NO.14 DEEP W.B.TK(S)	71-81	582.2	596.7	-0.94	1.00	2568
NO.15 DEEP W.B.TK(S)	71-81	673.3	690.2	-1.49	2.11	1239
NO.16 DEEP W.B.TK(S)	71-81	673.3	690.2	-1.49	2.11	1239
NO.17 DEEP W.B.TK(S)	71-84	967.4	991.6	3.10	13.70	26
NO.18 DEEP W.B.TK(S)	71-84	967.4	991.6	3.10	13.70	26
NO.19 DEEP W.B.TK(S)	61-71	582.7	597.3	-29.70	1.00	2568
NO.20 DEEP W.B.TK(S)	61-71	582.7	597.3	-29.70	1.00	2568
NO.21 DEEP W.B.TK(S)	61-71	681.7	698.9	-29.09	2.13	1234
NO.22 DEEP W.B.TK(S)	61-71	681.7	698.9	-29.09	2.13	1234
NO.23 DEEP W.B.TK(S)	49-61	550.9	564.7	-58.33	1.05	2303
NO.24 DEEP W.B.TK(S)	49-61	550.9	564.7	-58.33	1.05	2303
NO.25 DEEP W.B.TK(S)	49-61	589.4	604.1	-59.34	2.86	1599
NO.26 DEEP W.B.TK(S)	49-61	589.4	604.1	-59.34	2.86	1599
NO.27 DEEP W.B.TK(S)	49-61	589.4	604.1	-59.34	2.86	1599
NO.28 DEEP W.B.TK(S)	49-61	589.4	604.1	-59.34	2.86	1599
NO.29 DEEP W.B.TK(S)	18-25	378.5	387.9	-108.58	10.20	1460
NO.30 DEEP W.B.TK(S)	18-25	378.5	387.9	-108.58	10.20	1460
NO.31 DEEP W.B.TK(S)	6-14	841.5	862.6	-139.35	14.75	4547
SUB. TOTAL		19687.0	20179.3			

HEAVY FUEL OIL TANK						
COMPARTMENT	LOCATION (FR.NO.)	VOLUME 100% (M ³)	WEIGHT 98% (TONS)	CEN. OF GRAVITY L.C.G. (M)	V.C.G. (M)	MAX F.S.MOM. (M ²)
NO.3 H.F.O.TK(S)	91-98	906.2	870.3	52.60	11.45	331
NO.4 H.F.O.TK(S)	91-98	906.2	870.3	52.60	11.45	331
NO.5 H.F.O.TK(S)	71-91	912.0	875.9	25.57	10.54	249
NO.6 H.F.O.TK(S)	71-91	912.0	875.9	25.57	10.54	249
NO.7 H.F.O.TK(S)	61-71	845.2	811.7	-30.03	12.02	20
NO.8 H.F.O.TK(S)	61-71	845.2	811.7	-30.03	12.02	20
NO.9 H.F.O.TK(S)	51-61	972.7	934.2	-58.99	12.00	157
NO.10 H.F.O.TK(S)	51-61	972.7	934.2	-58.99	12.00	157
NO.11 H.F.O.TK(S)	51-61	972.7	934.2	-58.99	12.00	157
NO.12 H.F.O.TK(S)	51-61	972.7	934.2	-58.99	12.00	157
NO.13 H.F.O.TK(S)	30-51	347.5	333.7	-82.19	13.82	41
NO.14 H.F.O.TK(S)	30-51	347.5	333.7	-82.19	13.82	41
SUB. TOTAL		7265.1	6977.3			

LOW SULFUR FUEL OIL TANK						
COMPARTMENT	LOCATION (FR.NO.)	VOLUME 100% (M ³)	WEIGHT 98% (TONS)	CEN. OF GRAVITY L.C.G. (M)	V.C.G. (M)	MAX F.S.MOM. (M ²)
LOW SULFUR F.O.TK(S)	51-57	583.8	560.7	-64.75	11.64	108
SUB. TOTAL		583.8	560.7			

DIESEL OIL TANK						
COMPARTMENT	LOCATION (FR.NO.)	VOLUME 100% (M ³)	WEIGHT 98% (TONS)	CEN. OF GRAVITY L.C.G. (M)	V.C.G. (M)	MAX F.S.MOM. (M ²)
D.O.STOR.TK(S)	25-28	242.2	201.7	-95.64	7.55	784
D.O.SERV.TK(S)	25-28	112.4	93.6	-96.74	10.55	146
SUB. TOTAL		354.6	295.3			

LUBRICATION OIL TANK						
COMPARTMENT	LOCATION (FR.NO.)	VOLUME 100% (M ³)	WEIGHT 98% (TONS)	CEN. OF GRAVITY L.C.G. (M)	V.C.G. (M)	MAX F.S.MOM. (M ²)
LUBRICATION OIL TANK	43-51	137.6	121.3	-76.36	14.58	4
SUB. TOTAL		137.6	121.3			

FRESH WATER TANK						
COMPARTMENT	LOCATION (FR.NO.)	VOLUME 100% (M ³)	WEIGHT 100% (TONS)	CEN. OF GRAVITY L.C.G. (M)	V.C.G. (M)	MAX F.S.MOM. (M ²)
F.W.TK(S)	24-28	168.1	168.1	-97.06	16.00	8
SUB. TOTAL		168.1	168.1			

MISCELLANEOUS TANK						
COMPARTMENT	LOCATION (FR.NO.)	VOLUME 100% (M ³)	WEIGHT 98% (TONS)	CEN. OF GRAVITY L.C.G. (M)	V.C.G. (M)	MAX F.S.MOM. (M ²)
MISCELLANEOUS TANK	23-41	95.1	94.2	-94.21	1.30	47
SUB. TOTAL		95.1	94.2			

SHIP EQUIPMENTS		
EQUIPMENT	Q'TY	DECK EQUIPMENT
ANCHOR	2ST	TYPE H.H.P. STOCKLESS BOW ANCHOR
DECK MACHINERY	2ST	COMBINED HOORING WINCH/WINDLASS
LIFE BOAT	10ST	ROOFING WINCH
PILOT DOOR	2ST	TYPE 1, TOTALLY ENCLOSED
LIFE RAFT	4ST	TYPE 1, INFLATABLE(16P)
BOW THRUSTER	1ST	TYPE 1, CONTROLLABLE PITCH WINDTOR BRASS
PROVISION CRANE	1ST	TYPE 1, ELECTRO-HYD.

MACHINERY EQUIPMENT		
EQUIPMENT	Q'TY	DECK EQUIPMENT
WINCH	1ST	TYPE 1, B&W TOKOBNIC
DIESEL GENERATOR ENGINE	4ST	TYPE 1, 4-STROKE, TRUNK-PISTON
AUX. BOILER	1ST	TYPE 1, HORI. SMOKE TUBE
EXH. GAS BOILER	1ST	TYPE 1, HORI. SMOKE TUBE
D/E/C GENERATOR ENGINE	1ST	TYPE 1, 4-STROKE, TRUNK-PISTON
F.W. GENERATOR	1ST	TYPE 1, LOW PRESSURE EVAPORATOR
PROPELLER	1ST	TYPE 1, FIXED PITCH
STEERING GEAR	1ST	TYPE 1, ELECT-HYD. 2RMH-CLY.

NAVIGATION AND COMMUNICATION EQUIPMENT		
EQUIPMENT	Q'TY	DECK EQUIPMENT
RADAR PLANT 4 INS	1ST	STN ATLAS ELEKTRONIK DRH
DYD COMPASS	1ST	RAYTHEON ANSCHUTZ
MAGNETIC COMPASS	1ST	RAYTHEON ANSCHUTZ
RADIO PILOT	1ST	RAYTHEON ANSCHUTZ
ECHO SOUNDER	2ST	STN ATLAS ELEKTRONIK DRH
SPEED LOG	1ST	STN ATLAS ELEKTRONIK DRH
HEATHER FAX RECORDER	1ST	STN ATLAS ELEKTRONIK DRH
SRT-CON (STD-B)	1ST	STN ATLAS ELEKTRONIK DRH
SRT-CON (STD-C)	1ST	STN ATLAS ELEKTRONIK DRH
VOTAGE DATA RECORDER	1ST	STN ATLAS ELEKTRONIK DRH
RADIO, INDEXT. SYS.(RIS)	1ST	STN ATLAS ELEKTRONIK DRH
LORAN-C NAVIGATOR	1ST	STN ATLAS ELEKTRONIK DRH
V.H.F. RADIO TEL.	3ST	STN ATLAS ELEKTRONIK DRH
COMMUN. SERIAL SYSTEM	1ST	RRRINE RADIO CO.,LTD.
DGPS NAVIGATOR	1ST	STN ATLAS ELEKTRONIK DRH
RADIO PLANT	1ST	STN ATLAS ELEKTRONIK DRH
NAVTEX RECEIVER	1ST	STN ATLAS ELEKTRONIK DRH
E.P.I.R.B.	1ST	STN ATLAS ELEKTRONIK DRH

PUMPS	
EQUIPMENT	Q'TY
BALLAST & BILGE PUMP	2ST
EX'CY FIRE PUMP	1ST
BILGE, FIRE & GENERAL SERV. PUMP	1ST
FIRE PUMP	1ST
ANTI-HEELING PUMP	1ST

CONTAINER STOWAGE TABLE	
BAY NO.	20FT CONTAINER STOWAGE TABLE
7	00 01 02 03 04 05 06 07 08 09 10 11 12 13 14 15 16 17 18 19 20 21 22 23 24 25 26 27 28 29 30 31 32 33 34 35 36 37 38 39 40 41 42 43 44 45 46 47 48 49 50 51 52 53 54 55 56 57 58 59 60 61 62 63 64 65 66 67 68 69 70 71 72 73 74 75 76 77 78 79 80 81 82 83 84 85 86 87 88 89 90 91 92 93 94 95 96 97 98 99 100

40FT CONTAINER STOWAGE TABLE	
BAY NO.	40FT CONTAINER STOWAGE TABLE
8	00 01 02 03 04 05 06 07 08 09 10 11 12 13 14 15 16 17 18 19 20 21 22 23 24 25 26 27 28 29 30 31 32 33 34 35 36 37 38 39 40 41 42 43 44 45 46 47 48 49 50 51 52 53 54 55 56 57 58 59 60 61 62 63 64 65 66 67 68 69 70 71 72 73 74 75 76 77 78 79 80 81 82 83 84 85 86 87 88 89 90 91 92 93 94 95 96 97 98 99 100

CLASSIFICATIONS	
CLASSIFICATION	PLAN
Germanischer Lloyd (GL)	PLAN
100A5E	"Container Ship", SOLAS II-2, Reg.19, IW
MC E. AUT	LOS ANGELES EXPRESS

DEADWEIGHT SCALE	
T.P.D. (M)	DEADWEIGHT (TONNES)
15.00	112639.6
14.521	112639.6
14.00	112639.6
13.50	112639.6
13.00	112639.6
12.50	112639.6
12.00	112639.6
11.50	112639.6
11.00	112639.6
10.50	112639.6
10.00	112639.6
9.50	112639.6
9.00	112639.6
8.50	112639.6
8.00	112639.6
7.50	112639.6
7.00	112639.6
6.50	112639.6
6.00	112639.6
5.50	112639.6
5.00	112639.6
4.50	112639.6
4.00	112639.6
3.50	112639.6
3.00	112639.6
2.50	112639.6
2.00	112639.6
1.50	112639.6
1.00	112639.6
0.50	112639.6
0.00	112639.6

LENGTH PARTICULARS

Length Over All: 900.00 M
 Length Between Perps: 286.56 M
 Breadth (mld): 40.00 M
 Depth (mld): 24.20 M
 Draft Design (mld): 12.00 M
 Draft Scant. (mld): 14.50 M

SERVICE SPEED : 25.6 Knots at design draft

MAIN ENGINE
 TYPE : B&W 10K980-C
 MCR : 77,600 PS x 104.0 RPM
 NCR : 69,840 PS x 100.4 RPM
 COMPLEMENT : 29 + 6(Suez Crew) Persons

CLASSIFICATIONS
 Germanischer Lloyd (GL) PLAN
 100A5E, "Container Ship", SOLAS II-2, Reg.19, IW
 MC E. AUT LOS ANGELES EXPRESS

4092
 B(A)-10

THIS DRAWING OR DOCUMENT IS THE PROPERTY OF DAEWOO SHIPBUILDING & MARINE ENGINEERING CO., LTD. AND MUST NOT BE REPRODUCED OR USED FOR ANY OTHER PURPOSE WITHOUT THE WRITTEN PERMISSION OF DAEWOO.

DATE: May 28, 2008
 SCALE: 1/800
 DRAWN: DA102031
 CHECKED: H. J. KIM
 APPROVED: W. H. SHIN