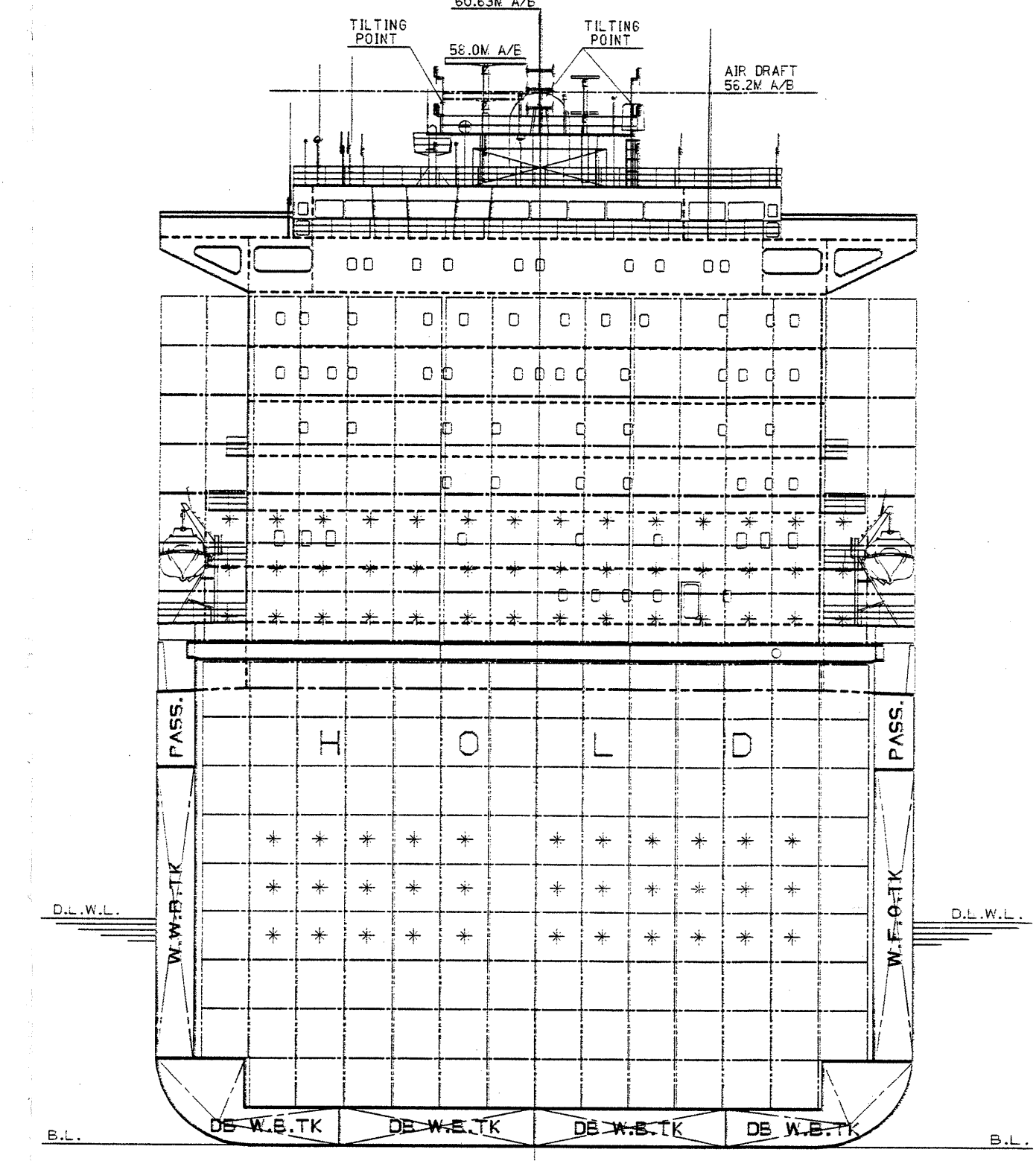
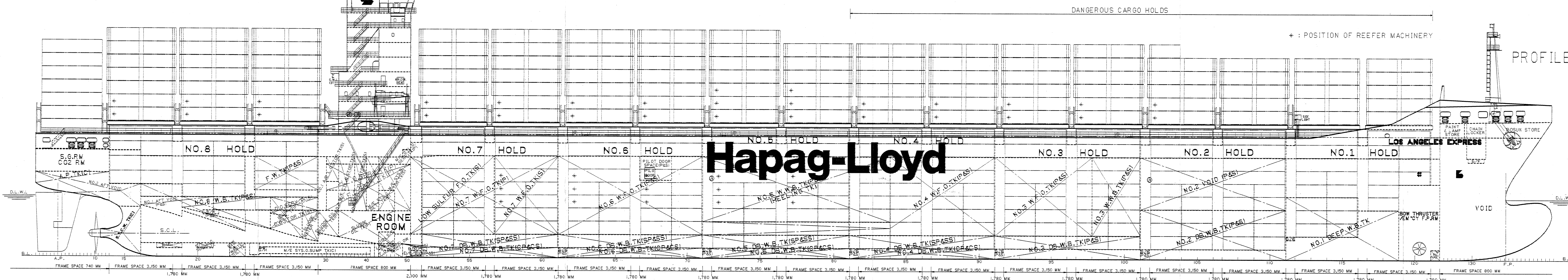


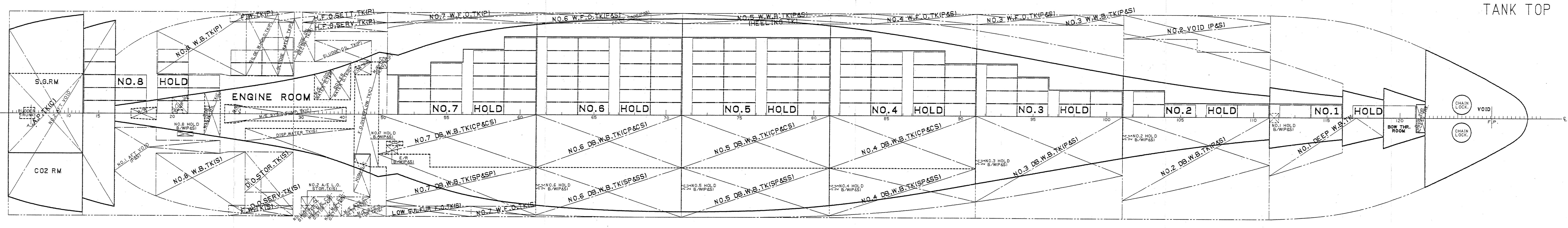
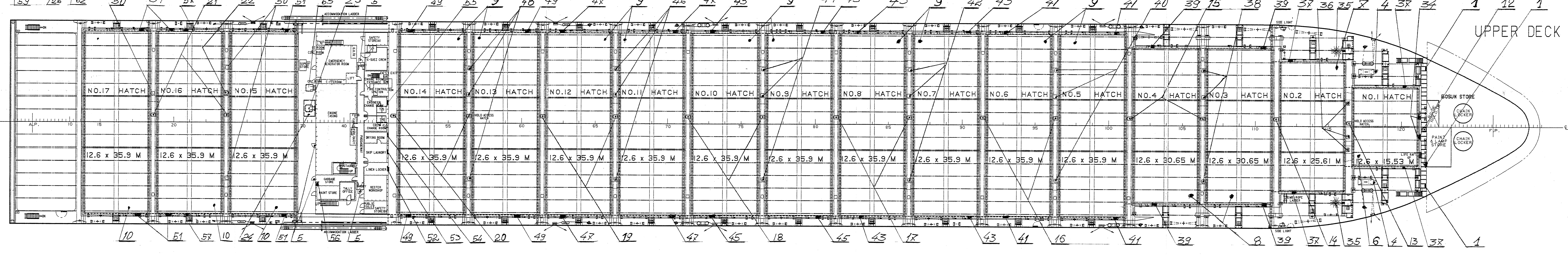
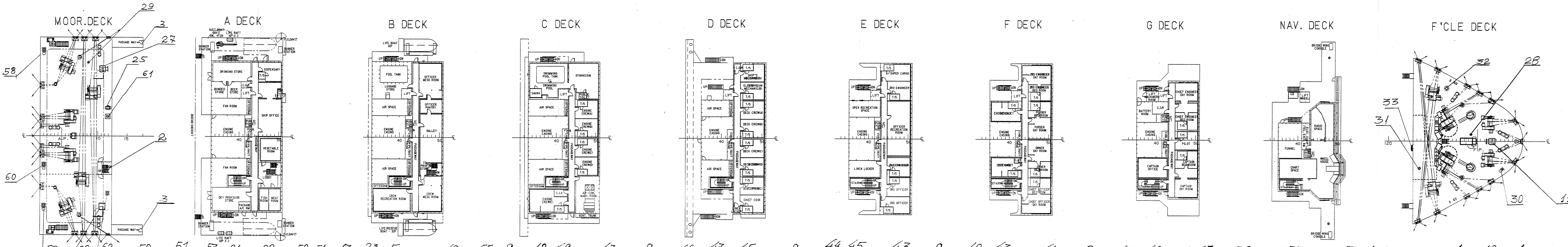
# GENERAL ARRANGEMENT

	NO.17 HATCH		NO.16 HATCH		NO.15 HATCH	
70	67	65	63	61	59	57
40'	20' / 40' / 45'		20' / 40' / 45'		20' / 40' / 45'	
	20' / 40'		20' / 40'		20' / 40'	

NO.14 HATCH		NO.13 HATCH		NO.12 HATCH		NO.11 HATCH		NO.10 HATCH		NO.9 HATCH		NO.8 HATCH		NO.7 HATCH		NO.6 HATCH		NO.5 HATCH		NO.4 HATCH		NO.3 HATCH		NO.2 HATCH		NO.1 HATCH		HATCH NO.	
56	53	51	49	47	45	43	41	39	37	35	33	31	29	27	25	23	21	19	17	15	13	11	9	7	5	3	1	20 FT	BAY NO.
54		50		46		42		38		34		30		26		22		18		14		10		6		2		40 FT	
20' / 40' / 45'		20' / 40' / 45'		20' / 40' / 45'		20' / 40' / 45'		20' / 40' / 45'		20' / 40' / 45'		20' / 40' / 45'		20' / 40' / 45'		20' / 40' / 45'		20' / 40' / 45'		20' / 40' / 45'		20' / 40' / 45'		20' / 40' / 45'		20' / 40' / 45'		ON DECK	
20' / 40'		20' / 40'		20' / 40'		20' / 40'		20' / 40'		20' / 40'		20' / 40'		20' / 40'		20' / 40'		20' / 40'		20' / 40'		20' / 40'		20' / 40'		20' / 40'		IN HOLD	



MIDSHIP SECTION



**PRINCIPAL PARTICULARS**

Length Over All	300.00 M
Length Between Perps	286.56 M
Breadth (mid)	40.00 M
Depth (mid)	24.20 M
Draft Design (mid)	12.00 M
Draft Scant. (mid)	14.50 M

SERVICE SPEED : 25.6 Knots at design draft  
 MAIN ENGINE TYPE : B4W 10K98MC-C  
 MCR : 77,600 PS x 104.0 RPM  
 NCR : 69,840 PS x 100.4 RPM  
 COMPLEMENT : 29 + 6(Suez Crew) Persons

**CLASSIFICATIONS**  
 Germanischer Lloyd (GL)  
 #100A5E, "Container Ship", SOLAS II-2, Reg. 19, IW  
 #MC E, AUT  
 ATTACHMENT TO FREEBOARD REPORT F430  
 SHIP NAME: LOS ANGELES EXPRESS  
 GL REG. NO: 130088  
 HULL NO: 4092

THIS DRAWING OR DOCUMENT IS THE PROPERTY OF BALFOUR SHIPBUILDING & MARINE ENGINEERING CO., LTD. AND MUST NOT BE PARTIALLY OR WHOLLY COPIED OR USED FOR ANY OTHER PURPOSE WITHOUT PRIOR WRITTEN PERMISSION OF BALFOUR.	
DRAWING NO. 4092	PROJECT NVA 8,750TEU CONTAINER SHIP
APPD BY W. H. SHIN	TITLE
CHKD BY J. H. LEE	GENERAL ARRANGEMENT
OWN BY H. J. KIM	
DEPT. 21 ST. 01	
INTEGRATED DESIGN TEAM	DATE June 4, 2008 1/800
	SCALE DWG. NO. DA1012222
	REV. NO. 0