

Dry Cargo fleet - Grumant



[Details](#) | [Dimensions](#) | [Cargo Capacities](#) | [Engine](#) | [Insurance](#) | [Contacts](#) | [Scheme](#)

SHIP DETAILS:

Ship Name	GRUMANT	POMORYE	ZAPOLYARYE	NOVAYA ZEMLYA	SEVERNAYA ZEMLYA
Built	AUGUST 2006	JULY 2007	AUGUST 2008	MARCH 2009	MAY 2009
	CHENGXI SHIPYARD, QINGDAO, CHINA				
IMO No.	9385879	9428499	9524205	9549281	9551923
Ship Type	BULK CARRIER/GEARLESS				
Flag	RUSSIAN				
Port of Registry	MURMANSK				
Class	KM ⚙ LU4 [I] A2 BULK CARRIER BC-A (ESP)	KM ⚙ LU4 [I] A1 BULK CARRIER BC-A (ESP)		KM ⚙ Arc4 [I] AUT1 BULK CARRIER BC-A (ESP)	
Classification Society	RUSSIAN MARITIME REGISTER OF SHIPPING				
Ice class	LU4 (EQUIVALENT TO FINNISH 1A)				

TONNAGE / DIMENSIONS

DWT	23 645	Length (OA)	180.50 m
GT (Gross Tonnage)	15 878	Length (BP)	173.28 m
NT (Net Tonnage)	7 206	Breadth moulded	22.86 m
		Draft	9.91 m

		Depth moulded	13.50 m
--	--	----------------------	---------

CARGO CAPACITIES / HOLDS

Grain capacity	25 298 m ³	Decks	1
Ore	STRENGTHENED	Number of Hatches/Holds	7/7
TEU	520	Hatch Size	6: 12.80 x 13.50 m 1: 12.80 x 10.80 m
Container fitted: VSL HAS NOT ON BOARD CONTAINER LASHING MATERIAL			

MAX PERMISSIBLE LOADS (T / m³)							
	Hold 1	Hold 2	Hold 3	Hold 4	Hold 5	Hold 6	Hold 7
Hatch Covers	1.75	1.75	1.75	1.75	1.75	1.75	1.75
Tank Top	22.50	12.50	29.00	18.50	29.00	12.50	29.00
Upper Deck	1.75						
Max Load (evenly) (mnts)	4820	4410	7340	6800	7340	4730	7220

ENGINE

	GRUMANT		POMORYE, ZAPOLYARYE, NOVAYA ZEMLYA, SEVERNAYA ZEMLYA	
	Main	Auxiliary	Main	Auxiliary
Number	1	3	1	3
Description	2S 8 CYL; MAN, K8Z 70 / 120 E		2S 6 CYL, MAN B&W 6S50MC-C	
Builder	DMR, GERMANY	DAIHATSU DIESEL MFG	RUSSIA	DAIHATSU DIESEL MFG
RPM	140	500	127	720
Output (KW/BHP)	8238 / 11200	600 / -	9480 / 12900	680 / -
Fuel grade	IFO-380 CST (RMG 380)			

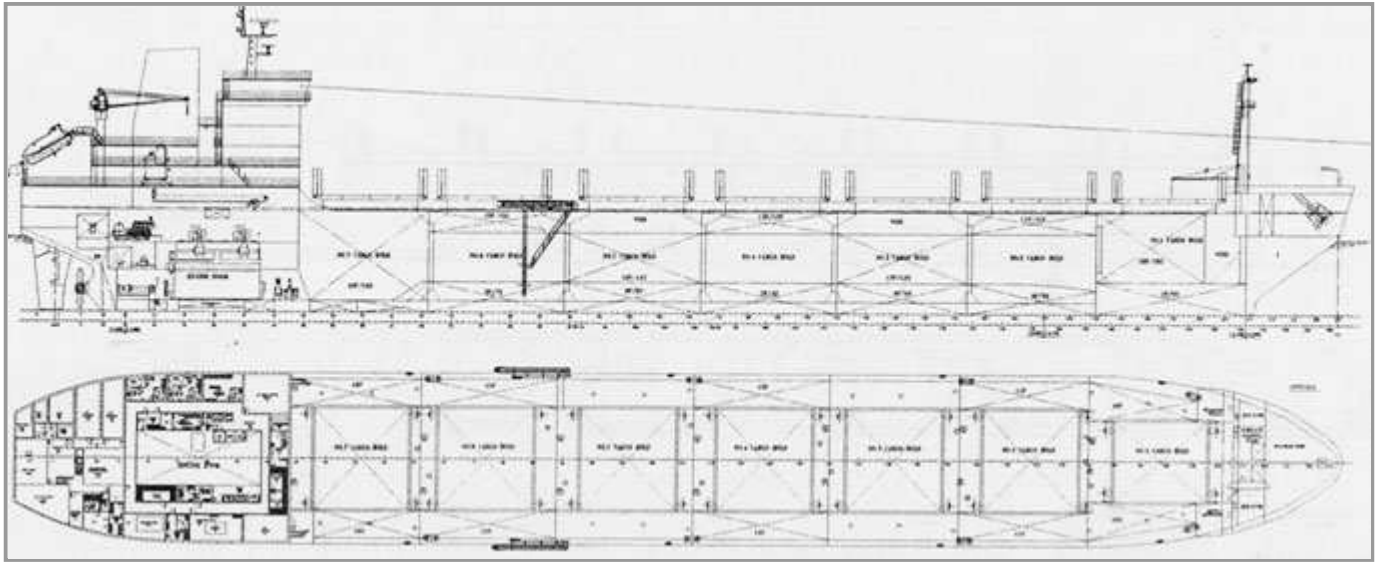
INSURANCE

P&I	The Steamship Mutual Underwriting Association (Bermuda) Limited
----------------	-----------------------------------------------------------------

CONTACTS

If you need more information, please, Contacts our Chartering / Operations Department.
Tel.: +7 (815 2) 48-10-80
Fax: +7 (815 2) 48-10-65

SCHEME



© 2008 Murmansk shipping company.